



ERRATUM

Open Access



CrossMark

# Erratum to: Isolated intradural Rosai-Dorfman disease of the spine: report of two cases

Yu Xin<sup>1†</sup>, Hui Shen<sup>2†</sup>, Desheng Kong<sup>1</sup>, Wenqing Jia<sup>1</sup>, Hai Liu<sup>1</sup> and Jun Yang<sup>1\*</sup>

Unfortunately, the original version of this article [1] contained an error in Fig. 1. This does not affect in any way the results, findings, interpretation, conclusions, or the scientific basis of the paper.

The correct version of Fig. 1 can be found below.

## Author details

<sup>1</sup>Department of Neurosurgery, Beijing Tiantan Hospital, Capital Medical University, No. 6, Tiantan Xili, Dongcheng District, Beijing 100050, People's Republic of China. <sup>2</sup>Department of Neurosurgery, Beijing Pinggu Hospital, No.59, Xinping North Road, Pinggu District, Beijing, People's Republic of China.

Received: 26 May 2016 Accepted: 26 May 2016

Published online: 10 June 2016

## Reference

1. Xin Y, Shen H, Kong D, Jia W, Liu H, Yang J. Isolated intradural Rosai-Dorfman disease of the spine: report of two cases. *Chin Neurosurg J.* 2016;2:13. doi:10.1186/s41016-016-0032-9.

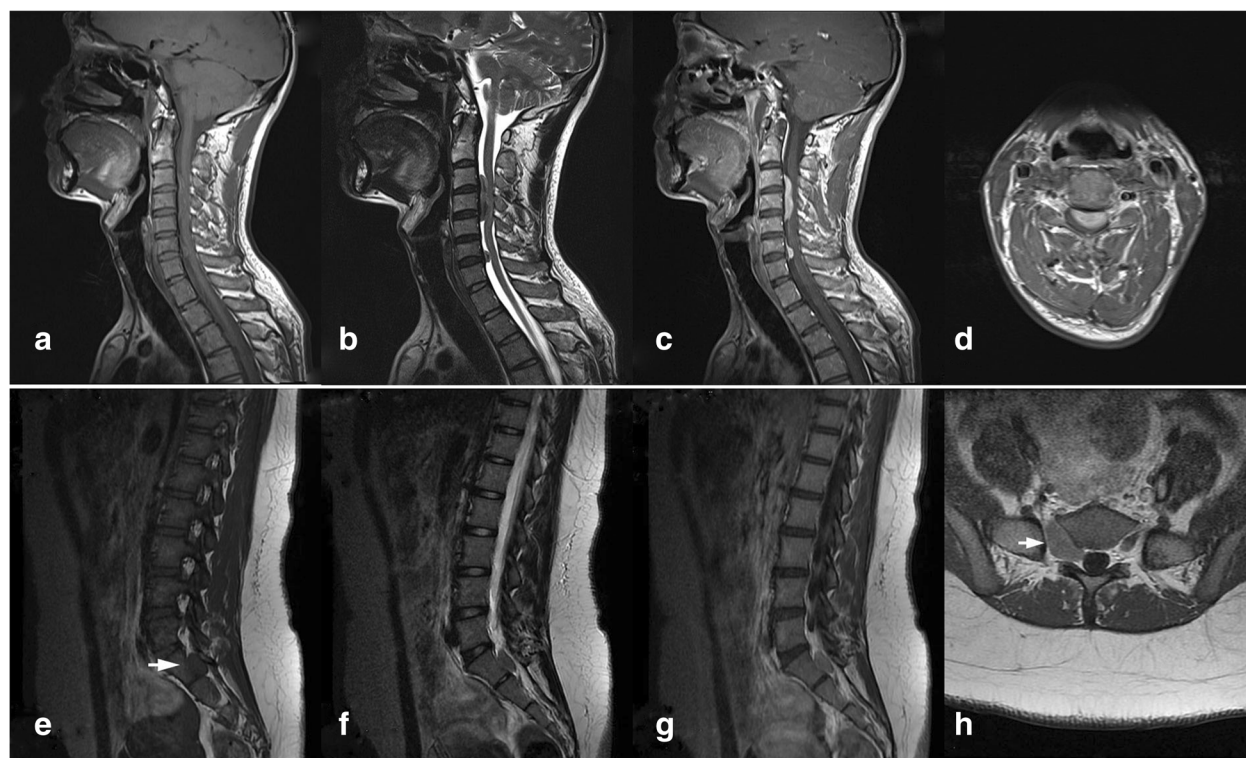
\* Correspondence: 13911707098@163.com

†Equal contributors

<sup>1</sup>Department of Neurosurgery, Beijing Tiantan Hospital, Capital Medical University, No. 6, Tiantan Xili, Dongcheng District, Beijing 100050, People's Republic of China

Full list of author information is available at the end of the article





**Fig. 1** Case 1. A preoperative MRI showing 2 distinct ventral, intradural and extramedullary lesions with homogeneously isointense on both sagittal T1- and T2-weighted images (**a** and **b**), with marked homogeneous enhancement on the sagittal (**c**) and axial (**d**) after gadolinium administration. A dural tail was observed at the ventral dura. Case 2.A preoperative MRI showing a S1/2 level extramedullary lesion with similar isointense on both sagittal T1- and T2- weighted images (**e** and **f**), and slight heterogeneous enhancement on the sagittal (**g**) and axial (**h**) after gadolinium administration

Submit your next manuscript to BioMed Central and we will help you at every step:

- We accept pre-submission inquiries
- Our selector tool helps you to find the most relevant journal
- We provide round the clock customer support
- Convenient online submission
- Thorough peer review
- Inclusion in PubMed and all major indexing services
- Maximum visibility for your research

Submit your manuscript at  
[www.biomedcentral.com/submit](http://www.biomedcentral.com/submit)

